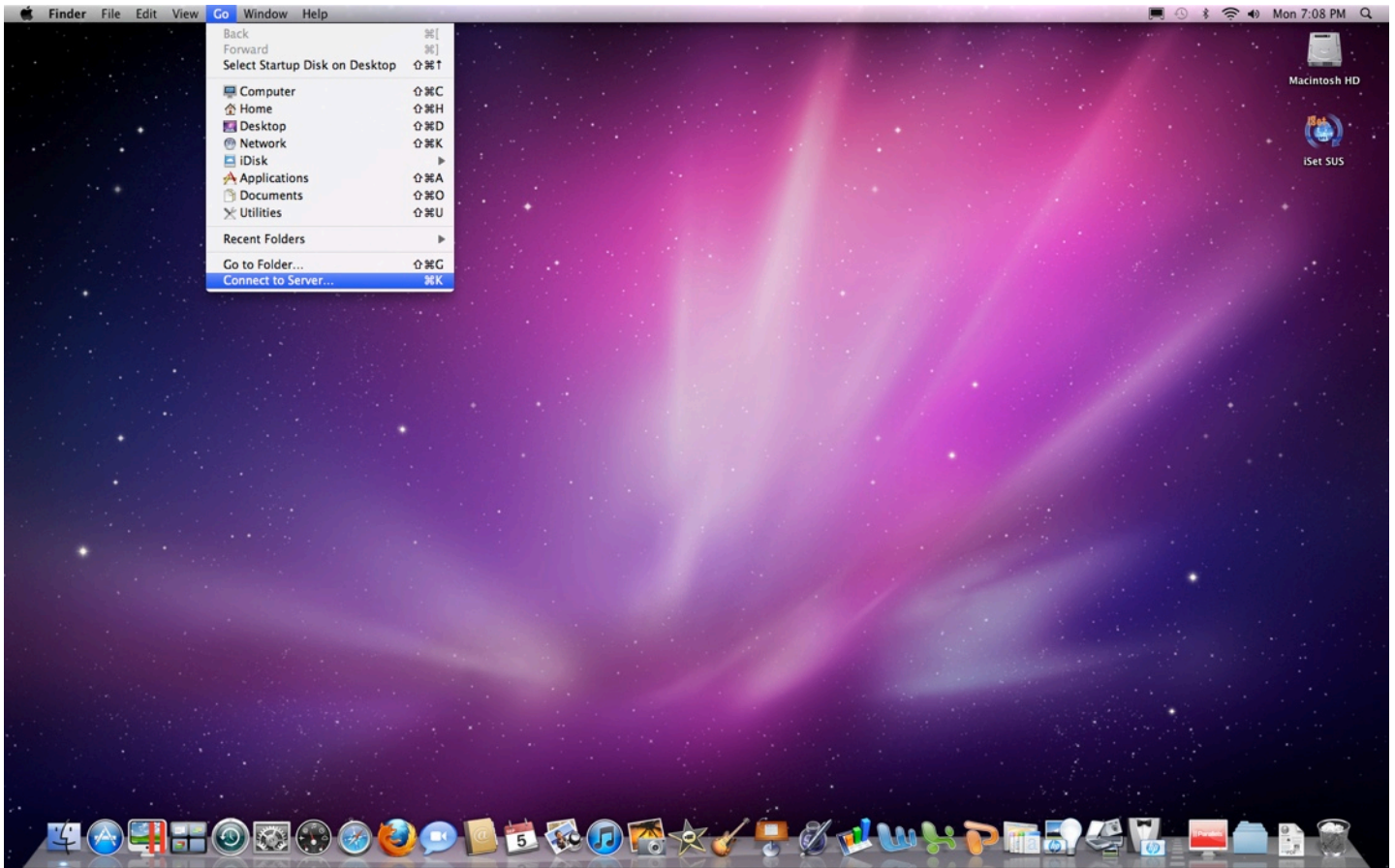


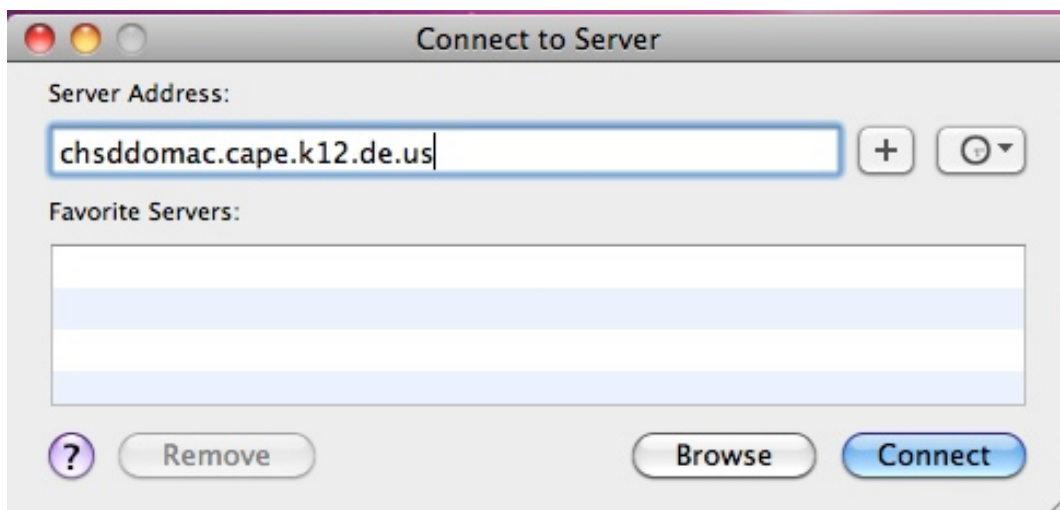
How to Log into the CHSD Curriculum folder on the DO Server

(These instructions will also work for accessing your home folder for the first time. Just skip mounting the CHSD Curriculum folder.)

1. Click on the GO MENU and select Connect to Server.



2. Type the name of the DO server into the window. See image below for spelling. Then click Connect.



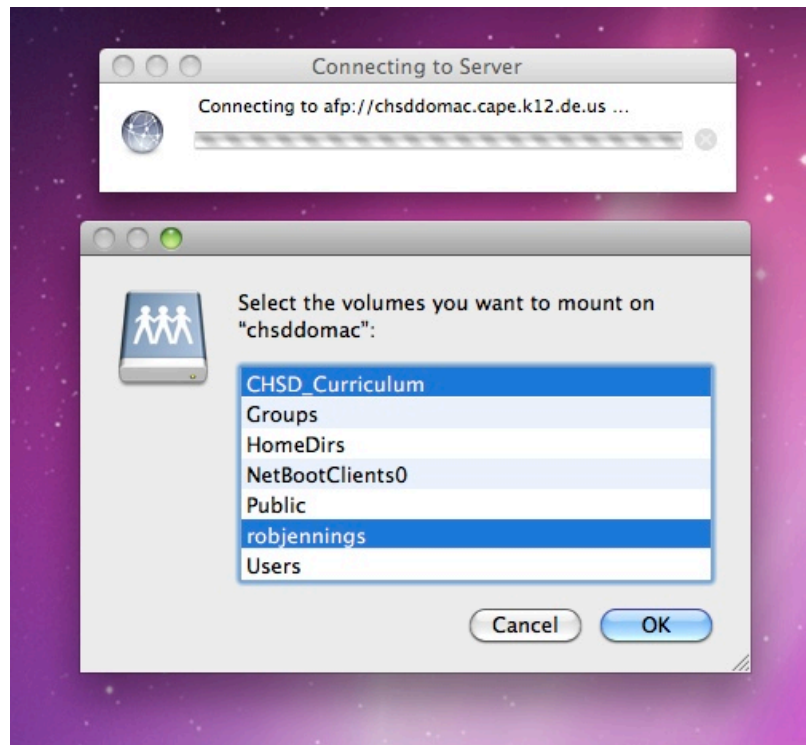
3. In the resulting window, enter your username (first and last all lowercase with no spaces) and the password “vikings”. Then click Connect.



4. It will now ask you to re-enter the password “vikings” and then enter a new password for yourself. Pick anything you like. This password doesn’t expire. Click Change Password when you are done.



5. In the next window that appears, you can pick the CHSD Curriculum folder to mount. You can also mount your home folder if you want to access it as well. Click OK after you have made your selections. To select more than one item, command click on items after the first selection.



6. Anything volume you select in the previous step will show up on your desktop like this. Usually the first item you selected will also open up in a window.

